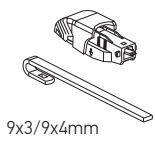
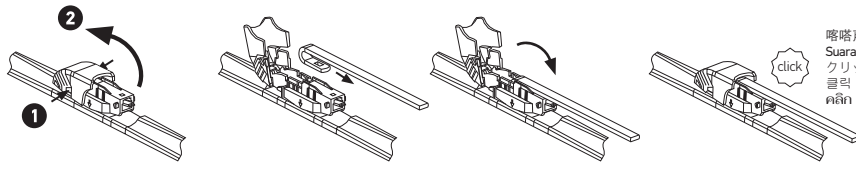




3A

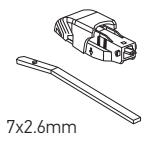


9x3/9x4mm

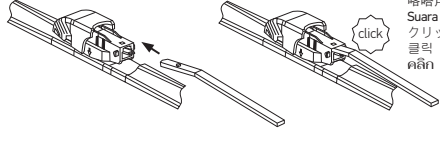


喀嗒声  
Suara Klik  
クリック  
클릭  
คลิก

3A

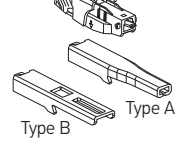


7x2.6mm

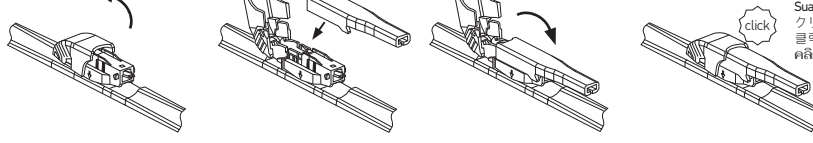


喀嗒声  
Suara Klik  
クリック  
클릭  
คลิก

3A

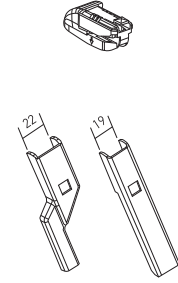


Type B  
Type A

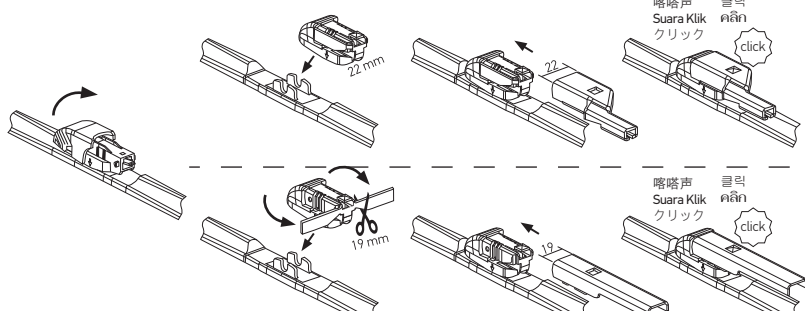


喀嗒声  
Suara Klik  
クリック  
클릭  
คลิก

3H-8

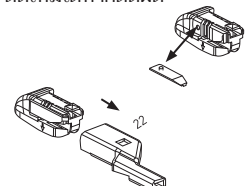


22  
19

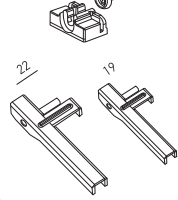


喀嗒声  
Suara Klik  
クリック  
클릭  
คลิก

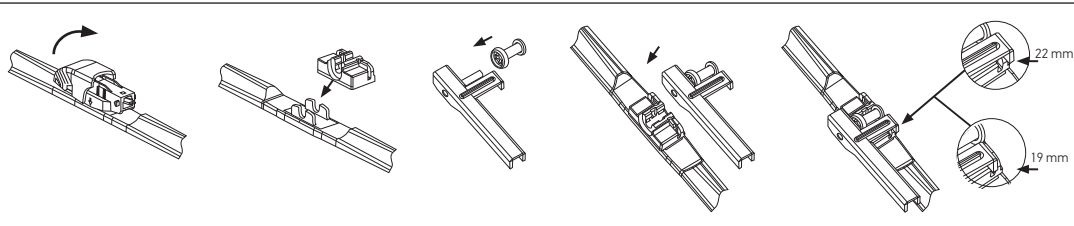
Re-attachable if miscut.  
如果误切，可重新连接。  
Pasang kembali jika salah potong.  
カッタミスをした場合は再取り付け可能  
잘못 자른 경우 다시 부착가능.  
ติดตั้งใหม่ได้หากตัดผิด



3B-2

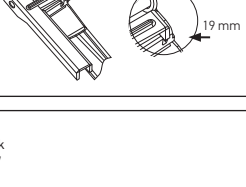


22  
19

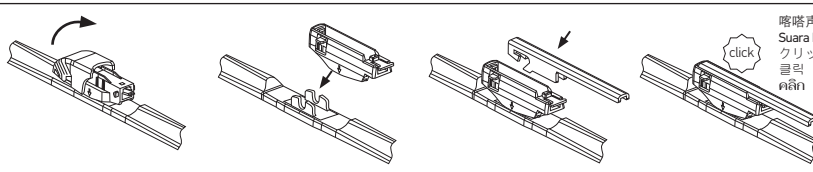
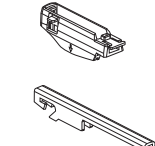


喀嗒声  
Suara Klik  
クリック  
클릭  
คลิก

Re-attachable if miscut.  
如果误切，可重新连接。  
Pasang kembali jika salah potong.  
カッタミスをした場合は再取り付け可能  
잘못 자른 경우 다시 부착가능.  
ติดตั้งใหม่ได้หากตัดผิด

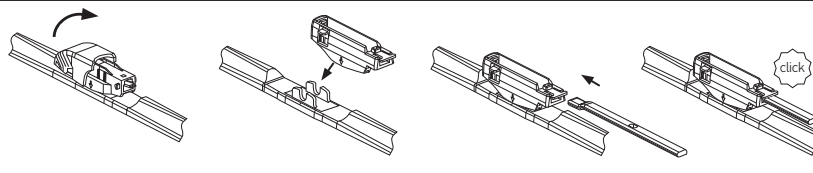
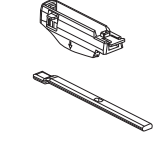


3F



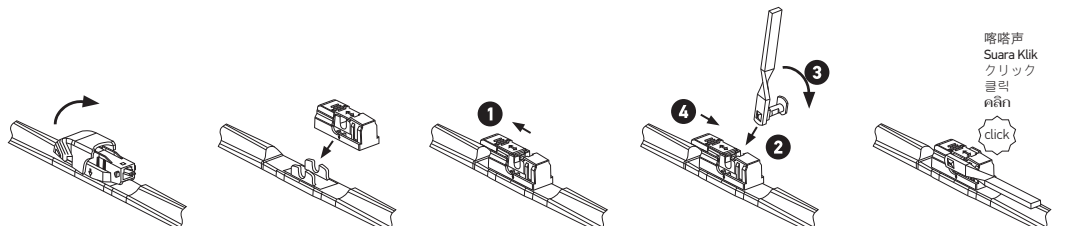
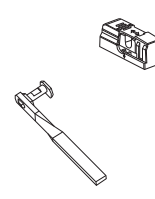
喀嗒声  
Suara Klik  
クリック  
클릭  
คลิก

3F



喀嗒声  
Suara Klik  
クリック  
클릭  
คลิก

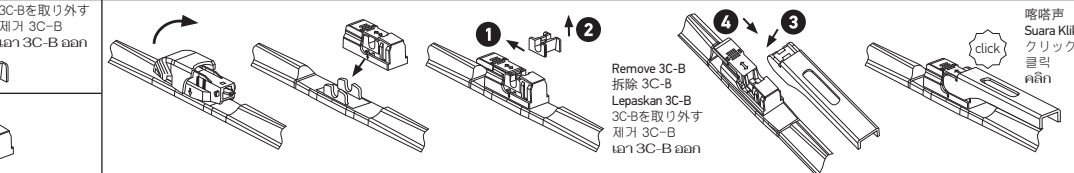
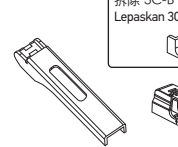
3C(+)-3C-B



喀嗒声  
Suara Klik  
クリック  
클릭  
คลิก

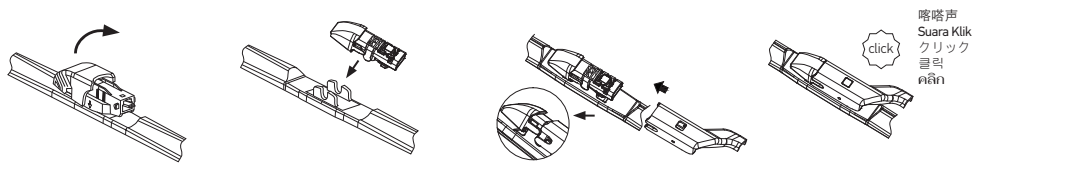
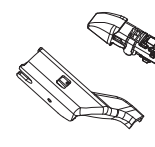
3C(-)-3C-B

Remove 3C-B  
拆除 3C-B  
Lepaskan 3C-B  
3C-B를  
3C-B  
3C-B  
3C-B



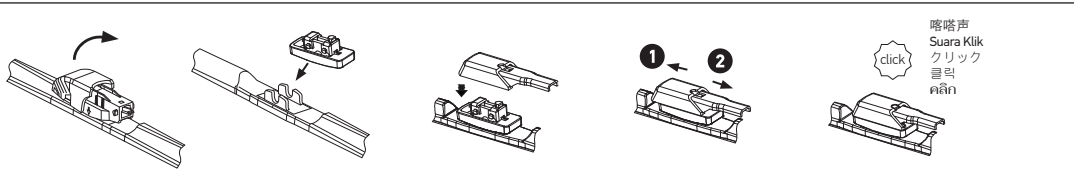
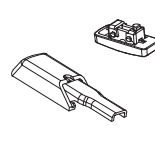
喀嗒声  
Suara Klik  
クリック  
클릭  
คลิก

3T



喀嗒声  
Suara Klik  
クリック  
클릭  
คลิก

3U



喀嗒声  
Suara Klik  
クリック  
클릭  
คลิก